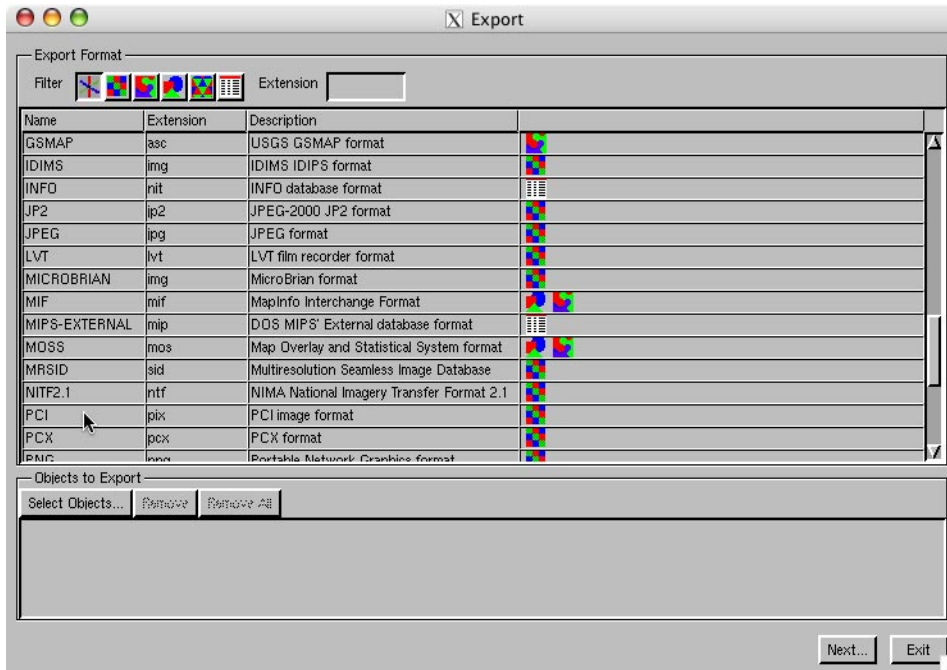


Export

Creating External Files



TNTmips' Export process lets you convert Project File materials to a wide variety of external raster, vector, shape, CAD, TIN, and database formats. The Export process is available in TNTmips and TNTedit but not in TNTview or TNTlite.

Unlike TNTmips' Import process, which lets you approach file and format selection from two directions (you can pick the file or the format first), in the Export process you must first choose the destination file format for export. Choosing the file format determines which object type you can select. You can export either vector or CAD objects to some file formats and VRML export can use raster, vector,

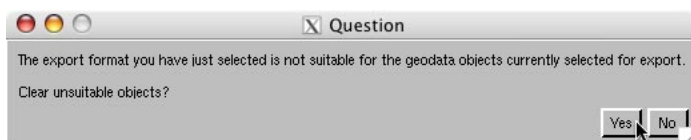
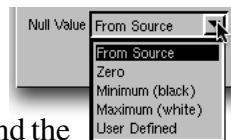
or TIN input. You can choose multiple objects to export but all must be of the same object type if more than one object type is supported. Choosing the format for rasters may also further narrow the objects you can select (for example, you cannot select 16- or 24-bit composite color raster objects for export to PCI).

The Export process opens with all formats supported for export shown in a list. This list can be sorted by name, extension, or description by clicking on the heading for that column. You can shorten the list of formats for easier selection by choosing the icon that corresponds to the object type you want to export. Similarly, entering the extension of the destination format will shorten the list as it is entered. If the extension is unique, there will be only one entry in the list once all three letters are entered, however, some extensions, such as .img, are associated with more than one format.

If you click on the Next button before selecting objects to export, you are prompted to select objects before the Export Parameters window opens. The format chosen for export determines the contents of the Export Parameters window. If the format selected does not directly handle georeference information, you specify how you would like the georeference information handled. Rasters may have choices related to null values and compression among other parameters. All objects chosen for a single export must have the same export parameters. For example, if multiple vectors are being exported to a format that supports styles and a single attribute table, such as ArcView shapefile format, the style assignment table and the attribute table selected for export must be named the same in all the vector objects. Multiple rasters selected for



Export Parameters choices for georeference (above) and null values (below).



If you change your mind about the format you want to export to after you have selected objects or are simply doing another export and have forgotten to remove the objects from the previous export and you select a new format that is unsuitable for the objects selected, you are notified and asked if you want to clear conflicting objects from the list.

export can have different null values, if From Source is chosen for the null value in the Export Parameters window.

Another sample Export Parameters window is shown at the right.

