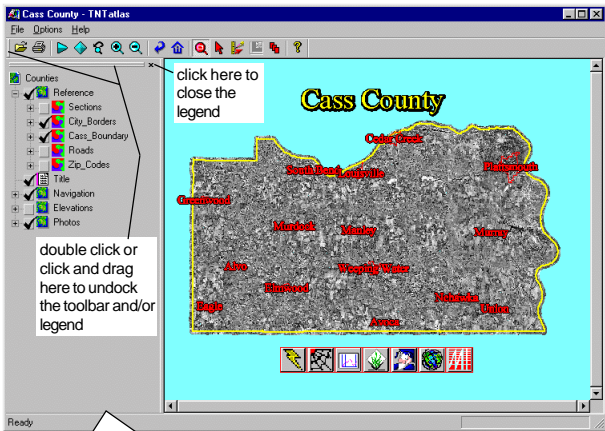
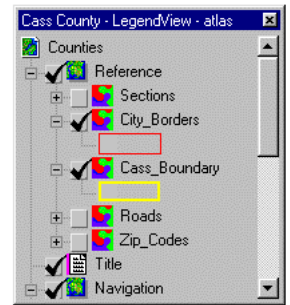
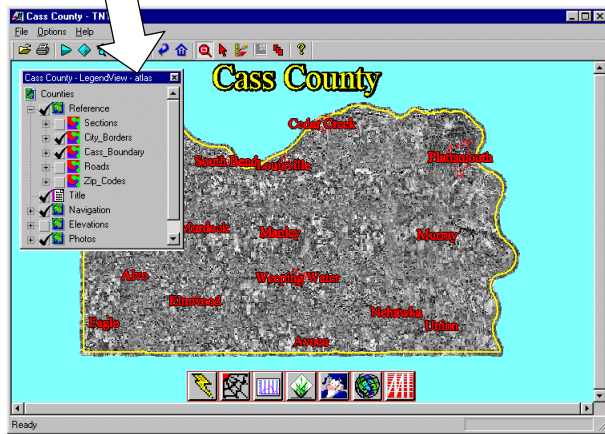


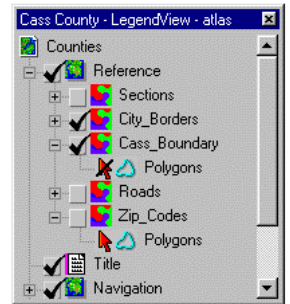
TNTAtlas® for Windows®



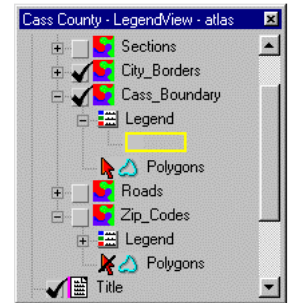
docked to undocked by double clicking



Legend Only



Details Only



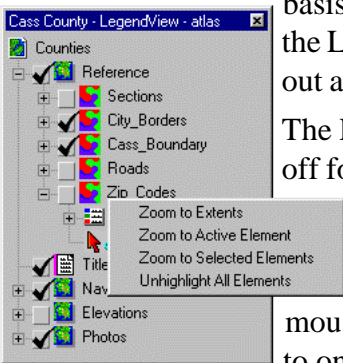
Mixed

TNTAtlas for Windows is a native Windows application with the functions of TNTAtlas (without using an X Server). It uses the same atlas files (.atl) and will open any object in a TNTmips Project File (.rvc) just as TNTAtlas does. You can navigate through a HyperIndex stack or a single layout atlas and have full use of the GeoToolbox, including the ability to display GPS in real time or from a log file and to save sketches and regions.

TNTAtlas for Windows is a prototype product with this release. Full implementation of all features in the original TNTAtlas will not be completed by the release cutoff date. Addition of features will continue, and because this product is free and runs under Windows, you will be able to download and run updates whether or not you own a professional TNT product with annual maintenance beyond V6.50. So, check the website for updates.

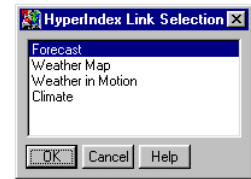
Some additional features not found in the original TNTAtlas for X are available simply because of the Windows environment, such as docking/undocking toolbars and legends. You can also close the legend by clicking. The legend can be reopened from the Options menu, which also lets you set what to view in the legend. The choices for legend viewing are: None, Legend Only, Details Only, and Mixed. If the LegendView is present, all groups are listed. The options determine what is shown in the LegendView in addition to group names. *Legend Only* provides a style sample for displayed element types in each layer. *Details Only* provides selection controls for displayed element types. *Mixed* provides both of these features. Style samples and selection controls can be expanded/collapsed on a layer by layer basis using the Windows' + and - icons. The Details component of the LegendView provides icons to turn element selection on/off without a separate controls window.

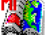
The LegendView also lets you turn layers and groups in a layout on/off for viewing. The layout automatically redraws when you change layer visibility, but there is a built-in delay so you can choose to change the visibility of multiple layers or groups and redraw the layout only once. All layers, groups, and layouts have a right mouse button menu so that you can zoom to layer extents, zoom one to one (rasters), zoom to selected elements (vector, CAD, TIN), and unhighlight selected elements (vector, CAD, TIN). If a DataTip has been set for the layer, it can also be turned on/off from this menu. The Group and Layout right mouse menus let you show/hide or expand/collapse all layers or groups, respectively. The Layout menu also includes the option to change the background color of the LegendView. The background color of the viewing area is set from Options menu. Additional features of TNTAtlas for Windows are listed on the back of this page.



Features in TNTAtlas for Windows

- Opens any atlas (*.atl) or any single object in TNTmips' Project File format.
- Lets you choose from multiple HyperIndex links for a single location.
- Supports hierarchical HyperIndex links and links to external files and web sites.

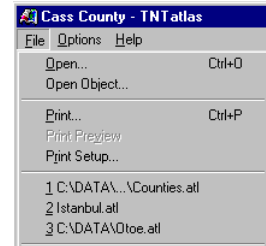


-  Provides toolbar and legend that can be docked/undocked.

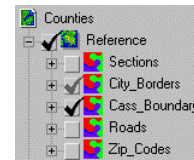
- Supports hotkeys for zoom in (+), zoom out (-), recenter (space), full view (0), zoom raster 1, 2, 3, 4X (1, 2, 3, 4) at position of cursor.


-  Allows legend viewing choices that include element selection capability.

- Shows atlas name or single-object description (or name if lacking description) in the atlas title bar.

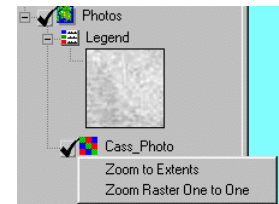


-  Retains and opens last atlas displayed as default. Also maintains a list on File menu of the last three atlases viewed.



-  Dims visibility indicator if layer not visible at current map scale.


- Right-click on any raster in LegendView and zoom to 1X for that raster.




- Shows combined legend for group if set up prior to saving layout in TNTmips.

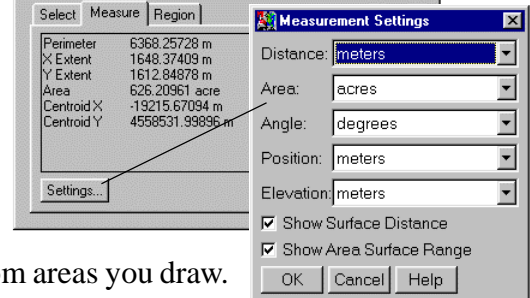
- Provides the same GeoToolbox tools for measuring and selecting found in TNTmips with same, extensive choice of units.

- Point tool continues adding points and provides minimum, maximum, and average distance between points (and more) until tool is cleared.

-  Individual points added with GeoToolbox can be deleted by selecting point (moving close to existing point selects it) and pressing delete key.



-  Uses Page Up and Page Down keys to increase and decrease the number of sides, respectively, for the regular polygon tool.




- Zooms to tool extents from right mouse button menu when GeoToolbox is open.

- Uses polygon and other closed-shape tools to create regions from areas you draw.

- Provides ability to choose previously saved regions for selection and measurement.

- Provides region combination functions.

-  Feature available only in TNTAtlas for Windows.